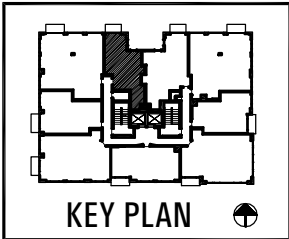


1 UNIT 6 PLAN  
1/8" = 1'-0"

Keating Development Group

hartshorne + plunkard  
architecture

  
**THE MORGAN**  
 Residences On Morgan Street  
 336 South Morgan Street Chicago, IL



PLANS AND ALL SPECIFICATIONS ARE SUBJECT TO REVISION AS DEEMED NECESSARY OR ADVISABLE BY RUIJER ARCHITECT OR AS REQUIRED BY LAW