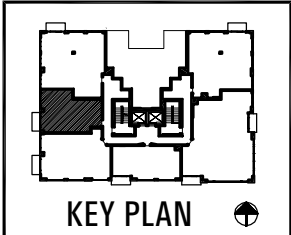


1 UNIT 1104 - PLAN  
1/8" = 1'-0"

Keating Development Group

hartshorne + plunkard  
architecture

  
**THE MORGAN**  
 Residences On Morgan Street  
 336 South Morgan Street Chicago, IL



DIAGRAMS AND ALL SPECIFICATIONS ARE SUBJECT TO REVISION AS DEEMED NECESSARY AND APPROVED BY DIVISION OF BUILDING ADJUTANT OR AS DETERMINED BY LAW